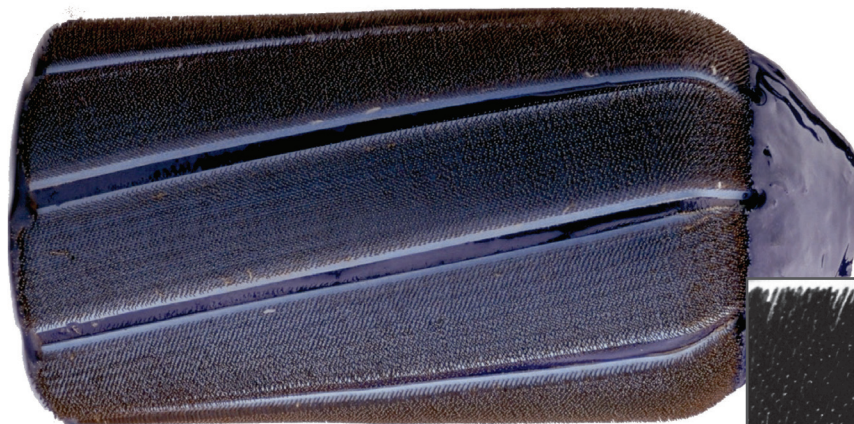
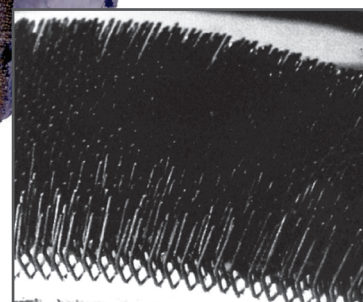


The POWER BRUSH™ PIG is an open cell polyurethane foam pig that is completely enclosed with flame hardened steel bristles for maximum action.



Flame Hardened Steel Brushes



DESCRIPTION

The polyurethane foam does not touch the pipe wall because it is completely coated with tough brushes, therefore, minimum tensile stress and wear is imposed on the foam. For this reason, the useful life of the POWER BRUSH™ PIG is much longer than the life of a conventional foam brush pig.

The bristles on the POWER BRUSH™ PIG clean more efficiently than the bristles on conventional foam brush pigs. The POWER BRUSH™ PIG has the poly pig flexibility. This rugged pig can be built to maintain a seal or to allow some of the propelling fluid, liquid or gas, to flow through the bristles. Fluid bypass allows the loosened debris to move ahead keeping the bristles cleaner.

APPLICATIONS

- New Construction
- Rust and Mill Scale Removal
- Cleaning Prior to Internal Coating
- Cleaning Prior to Drying to Low Dewpoints
- Removal of Hard Encrustations from Pipe Walls

This unique type of wire brush polyurethane pig has been successfully developed to meet the most stringent cleaning requirements for new construction or when extremely hard scale build-up on the wall of the pipe is encountered.

Inline Services, LLC.
27731 Commercial Park Rd
Tomball, TX 77375

phone: 281.401.8142
toll free: 888.973.0079
fax: 281.401.8147

www.inlineservices.com
sales@inlineservices.com

INTELLIGENT PIPELINE CLEANING
corrosion control • dewatering • pit cleaning